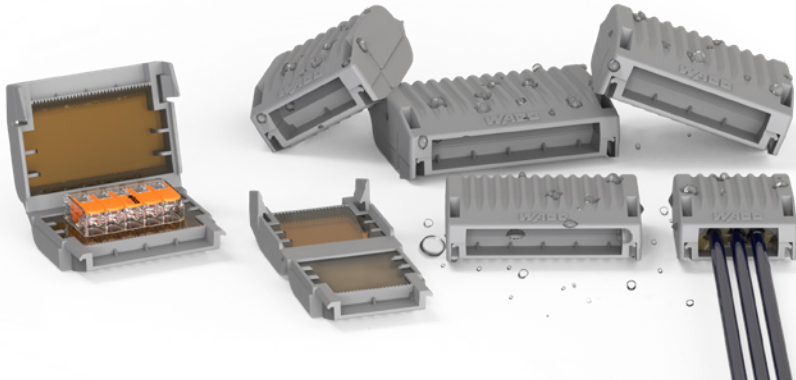




WAGO Gelboxes for Splicing Connectors

Simply Protected from Moisture



207-13xx/14xx Series

- Fast application – ready for direct, on-site deployment
- Unlimited shelf life
- Ease of use
- Exceptional versatility – made of silicone-free gel for use in all industries
- Safe application – VDE-tested and IPX8-certified

Applications and Advantages

Moisture protection	Condensation, heavy precipitation, powerful water jets: There are many situations where moisture can penetrate a junction box and cause problems. The new WAGO Gelbox now reliably provides splicing connectors with IPX8 levels of moisture protection.
Applications	In low-voltage applications (e.g., 230 V), the WAGO Gelboxes are used in distribution boxes together with splicing connectors, as this is the only way to double insulate the cable. For extra-low voltages (SELV), the WAGO Gelbox can be used without an additional housing; however, the conductor insulation must be suitable for these applications.
Product design	A film hinge connects two housing halves. Each half is pre-filled with a polyurethane-based gel, which is label- and silicone-free according to CLP (EU Chemicals Regulation). The gel has already reacted.
Benefits with splicing connectors	Both the WAGO Gelbox and Splicing Connectors act as a VDE-tested complete system for versatile applications. The WAGO Gelbox is ready for immediate use; the electrical system can be put into operation without waiting.

Installation



Open the gelbox.



Place the wired connector in the gelbox.



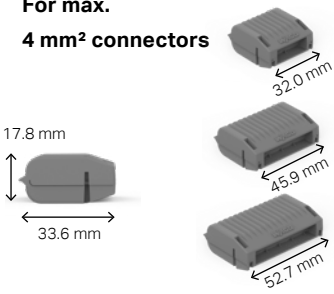
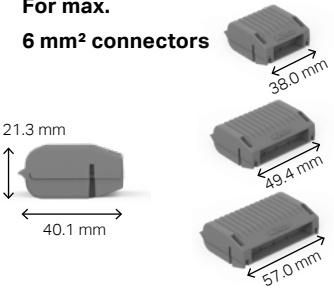
Close the gelbox.



Simply extend the circuit: Open the gelbox, remove gel from the connector, open the connector and connect new components to the cable.

Product Portfolio

Permissible combination of splicing connectors and gelbox; the rated data of the splicing connectors must be observed.

		221-412	221-413	221-415	221-612	221-613	221-615	2273-202	2273-203	2273-204	2273-208
For max. 4 mm² connectors 	207-1331	1 x	1 x	-	-	-	-	2 x	-	1 x	1 x
	207-1332	2 x	-	1 x	-	-	-	3 x	2 x	-	1 x
	207-1333	3 x	2 x	-	-	-	-	4 x	-	2 x	2 x
For max. 6 mm² connectors 	207-1431	-	-	-	1 x	1 x	-	-	-	-	-
	207-1432	-	-	-	2 x	-	1 x	-	-	-	-
	207-1433	-	-	-	3 x	2 x	-	-	-	-	-

Dimensions in mm

Rated surge voltage: 3 kV; Insulation resistance: 5 MΩ; Surrounding air temperature: 85 °C; Continuous operating temperature: 105 °C

Applications

- Outdoor areas
- Outdoor sockets
- Garden centers
- Farms
- Landscape lighting
- Parking lot lighting
- Car washes
- Charging stations and lighting systems in ports
- Perimeter wires (robotic lawn mowers)



Complete your order with:

2273 Series

- Rated voltage: 450 V
- Rated surge voltage: 4 kV
- Rated current: 24 A
- Surrounding air temperature: 60 °C
- Continuous operating temperature: 105 °C



221 Series, 4mm² and 6mm² Connectors

- Rated voltage: 450 V
- Rated surge voltage: 4 kV
- Rated current (**4 mm² connector**): 24 A
- Rated current (**6 mm² connector**): 41 A
- Surrounding air temperature: 60 °C
- Continuous operating temperature: 105 °C



Information Material

Tips for using splicing connectors and a gelbox information flyer



[www.wago.com/us/electrical-interconnections/
discover-installation-terminal-blocks-and-connectors/gelbox-from-wago](http://www.wago.com/us/electrical-interconnections/discover-installation-terminal-blocks-and-connectors/gelbox-from-wago)