

Lighting for the warehouse interior

Open plan area

Primary lighting



Area Bay 100W

Replaces 150W or 2x80W T5



Code: HBA1V
100W | 16,000lm | 4000K

Code: HBA1VEM
Emergency variant,
manual test



Area Bay 150W

Replaces 250W or 4x49W T5



Code: HBA2V
150W | 24,000lm | 4000K

Code: HBA2VEM
Emergency variant,
manual test



Area Bay 200W

Replaces 400W or 4x80W T5



Code: HBA3V
200W | 32,000lm | 4000K

Code: HBA3VEM
Emergency variant,
manual test



Area Bay 240W

Light the space using less fittings



Code: HBA4V
240W | 38,000lm | 4000K

Code: HBA4VEM
Emergency variant,
manual test

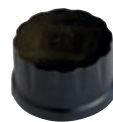


Area Bay PIR

Passive infra-red (PIR) motion sensor with daylight threshold switch

Compatible with Area Bay

Code: HBPIR



Area Bay MWS

Microwave motion sensor with daylight threshold switch

Compatible with Area Bay

Code: HBMWS



Area Bay DL

Daylight harvesting sensor with photocell

Compatible with Area Bay

Code: HBDLS

